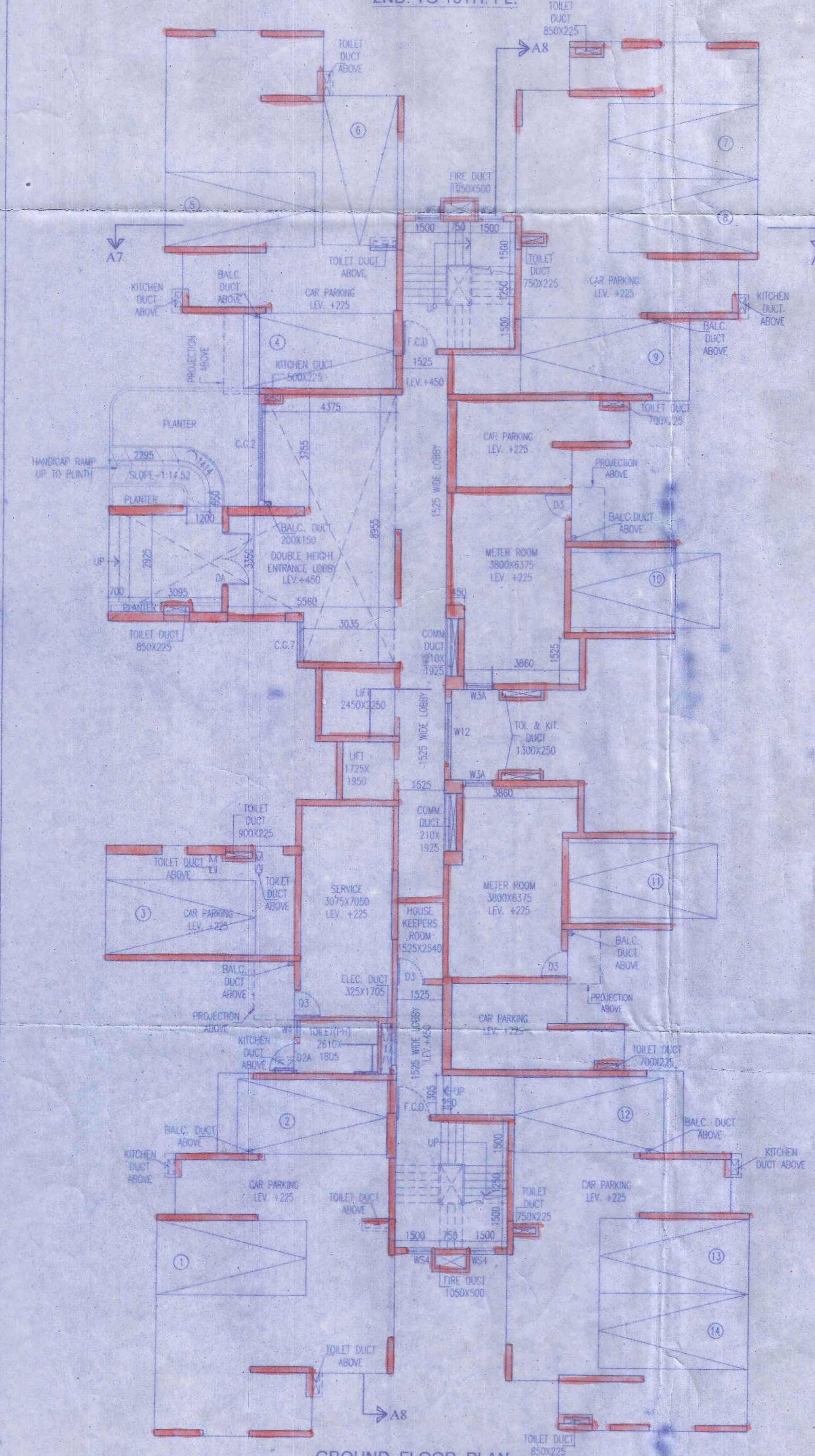
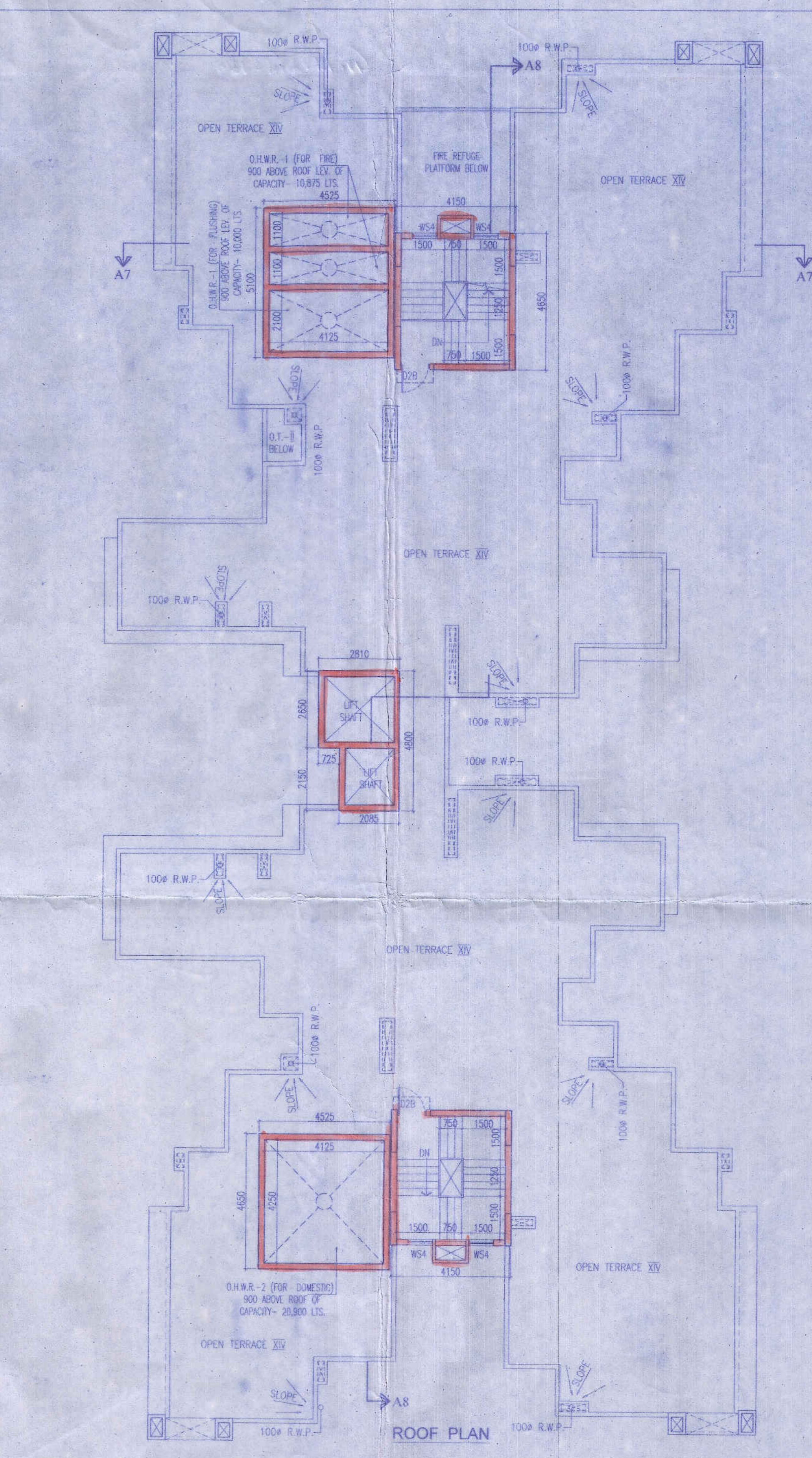


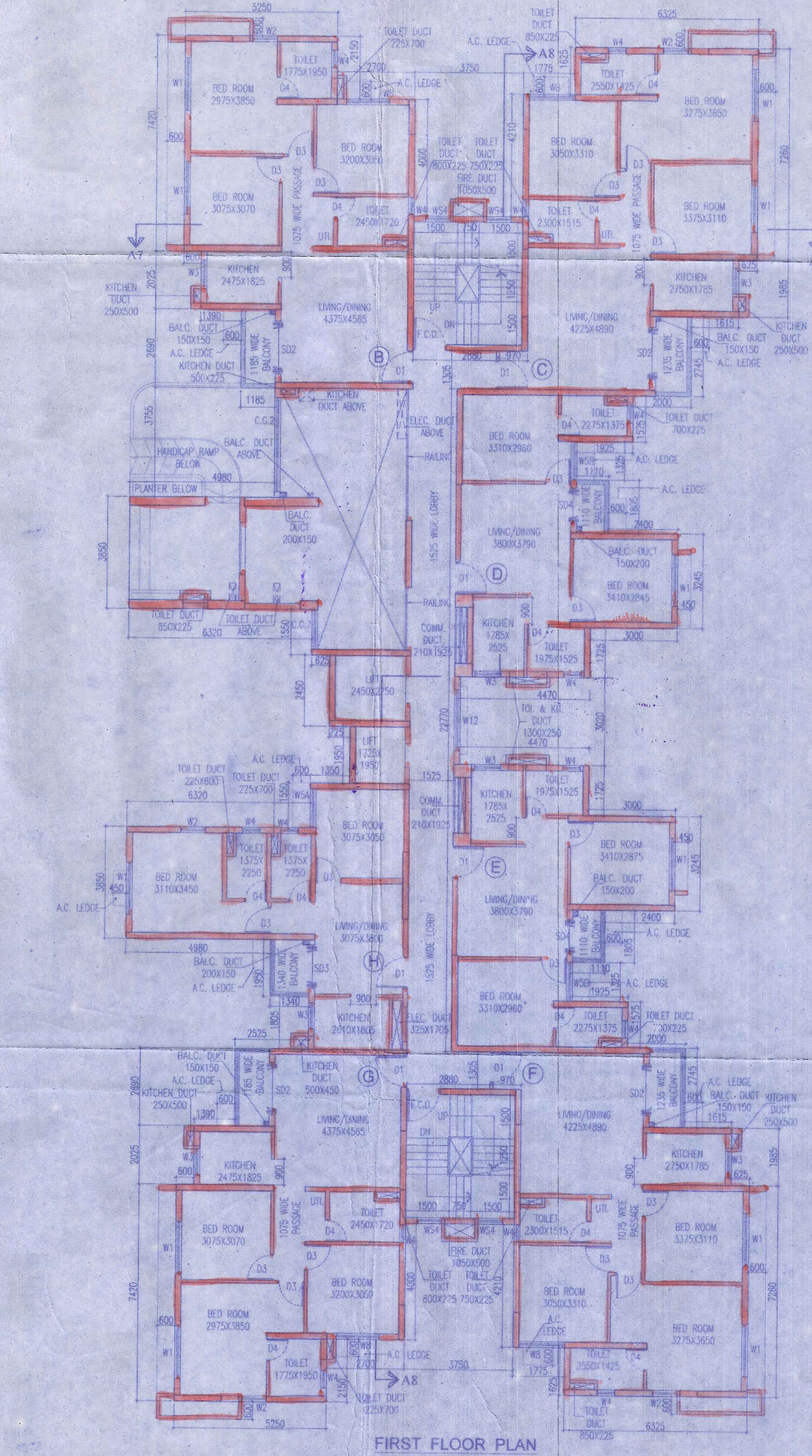
TYPICAL FLOOR PLAN  
2ND. TO 13TH FL.



GROUND FLOOR PLAN



ROOF PLAN



FIRST FLOOR PLAN

Name of the Land Owning Companies

1. Adarsh Builders Private Limited.
2. Adarsh Builders Private Limited.
3. Adarsh Builders Private Limited.
4. Adarsh Builders Private Limited.
5. Adarsh Builders Private Limited.
6. Adarsh Builders Private Limited.
7. Adarsh Builders Private Limited.
8. Adarsh Builders Private Limited.
9. Adarsh Builders Private Limited.
10. Adarsh Builders Private Limited.
11. Adarsh Builders Private Limited.
12. Adarsh Builders Private Limited.
13. Adarsh Builders Private Limited.
14. Adarsh Builders Private Limited.
15. Adarsh Builders Private Limited.
16. Adarsh Builders Private Limited.
17. Adarsh Builders Private Limited.
18. Adarsh Builders Private Limited.
19. Adarsh Builders Private Limited.
20. Adarsh Builders Private Limited.
21. Adarsh Builders Private Limited.
22. Adarsh Builders Private Limited.
23. Adarsh Builders Private Limited.
24. Adarsh Builders Private Limited.
25. Adarsh Builders Private Limited.
26. Adarsh Builders Private Limited.
27. Adarsh Builders Private Limited.
28. Adarsh Builders Private Limited.
29. Adarsh Builders Private Limited.
30. Adarsh Builders Private Limited.
31. Adarsh Builders Private Limited.
32. Adarsh Builders Private Limited.
33. Adarsh Builders Private Limited.
34. Adarsh Builders Private Limited.
35. Adarsh Builders Private Limited.
36. Adarsh Builders Private Limited.
37. Adarsh Builders Private Limited.
38. Adarsh Builders Private Limited.
39. Adarsh Builders Private Limited.
40. Adarsh Builders Private Limited.
41. Adarsh Builders Private Limited.
42. Adarsh Builders Private Limited.
43. Adarsh Builders Private Limited.
44. Adarsh Builders Private Limited.
45. Adarsh Builders Private Limited.
46. Adarsh Builders Private Limited.
47. Adarsh Builders Private Limited.
48. Adarsh Builders Private Limited.
49. Adarsh Builders Private Limited.
50. Adarsh Builders Private Limited.
51. Adarsh Builders Private Limited.
52. Adarsh Builders Private Limited.
53. Adarsh Builders Private Limited.
54. Adarsh Builders Private Limited.
55. Adarsh Builders Private Limited.
56. Adarsh Builders Private Limited.
57. Adarsh Builders Private Limited.
58. Adarsh Builders Private Limited.
59. Adarsh Builders Private Limited.
60. Adarsh Builders Private Limited.
61. Adarsh Builders Private Limited.
62. Adarsh Builders Private Limited.
63. Adarsh Builders Private Limited.
64. Adarsh Builders Private Limited.
65. Adarsh Builders Private Limited.
66. Adarsh Builders Private Limited.
67. Adarsh Builders Private Limited.
68. Adarsh Builders Private Limited.
69. Adarsh Builders Private Limited.
70. Adarsh Builders Private Limited.
71. Adarsh Builders Private Limited.
72. Adarsh Builders Private Limited.
73. Adarsh Builders Private Limited.
74. Adarsh Builders Private Limited.
75. Adarsh Builders Private Limited.
76. Adarsh Builders Private Limited.
77. Adarsh Builders Private Limited.
78. Adarsh Builders Private Limited.
79. Adarsh Builders Private Limited.
80. Adarsh Builders Private Limited.
81. Adarsh Builders Private Limited.
82. Adarsh Builders Private Limited.
83. Adarsh Builders Private Limited.
84. Adarsh Builders Private Limited.
85. Adarsh Builders Private Limited.
86. Adarsh Builders Private Limited.
87. Adarsh Builders Private Limited.
88. Adarsh Builders Private Limited.
89. Adarsh Builders Private Limited.
90. Adarsh Builders Private Limited.
91. Adarsh Builders Private Limited.
92. Adarsh Builders Private Limited.
93. Adarsh Builders Private Limited.
94. Adarsh Builders Private Limited.
95. Adarsh Builders Private Limited.
96. Adarsh Builders Private Limited.
97. Adarsh Builders Private Limited.
98. Adarsh Builders Private Limited.
99. Adarsh Builders Private Limited.
100. Adarsh Builders Private Limited.

KEY PLAN

SCHEDULE OF DOORS & WINDOWS			
NO	SILL	UNTEL	SIZE
D1	2150		1800X2150
D2	2150		1800X2150
D3	2150		1800X2150
D4	2150		1800X2150
D5	2150		1800X2150
D6	2150		1800X2150
D7	2150		1800X2150
D8	2150		1800X2150
D9	2150		1800X2150
D10	2150		1800X2150
D11	2150		1800X2150
D12	2150		1800X2150
D13	2150		1800X2150
D14	2150		1800X2150
D15	2150		1800X2150
D16	2150		1800X2150
D17	2150		1800X2150
D18	2150		1800X2150
D19	2150		1800X2150
D20	2150		1800X2150
D21	2150		1800X2150
D22	2150		1800X2150
D23	2150		1800X2150
D24	2150		1800X2150
D25	2150		1800X2150
D26	2150		1800X2150
D27	2150		1800X2150
D28	2150		1800X2150
D29	2150		1800X2150
D30	2150		1800X2150
D31	2150		1800X2150
D32	2150		1800X2150
D33	2150		1800X2150
D34	2150		1800X2150
D35	2150		1800X2150
D36	2150		1800X2150
D37	2150		1800X2150
D38	2150		1800X2150
D39	2150		1800X2150
D40	2150		1800X2150
D41	2150		1800X2150
D42	2150		1800X2150
D43	2150		1800X2150
D44	2150		1800X2150
D45	2150		1800X2150
D46	2150		1800X2150
D47	2150		1800X2150
D48	2150		1800X2150
D49	2150		1800X2150
D50	2150		1800X2150
D51	2150		1800X2150
D52	2150		1800X2150
D53	2150		1800X2150
D54	2150		1800X2150
D55	2150		1800X2150
D56	2150		1800X2150
D57	2150		1800X2150
D58	2150		1800X2150
D59	2150		1800X2150
D60	2150		1800X2150
D61	2150		1800X2150
D62	2150		1800X2150
D63	2150		1800X2150
D64	2150		1800X2150
D65	2150		1800X2150
D66	2150		1800X2150
D67	2150		1800X2150
D68	2150		1800X2150
D69	2150		1800X2150
D70	2150		1800X2150
D71	2150		1800X2150
D72	2150		1800X2150
D73	2150		1800X2150
D74	2150		1800X2150
D75	2150		1800X2150
D76	2150		1800X2150
D77	2150		1800X2150
D78	2150		1800X2150
D79	2150		1800X2150
D80	2150		1800X2150
D81	2150		1800X2150
D82	2150		1800X2150
D83	2150		1800X2150
D84	2150		1800X2150
D85	2150		1800X2150
D86	2150		1800X2150
D87	2150		1800X2150
D88	2150		1800X2150
D89	2150		1800X2150
D90	2150		1800X2150
D91	2150		1800X2150
D92	2150		1800X2150
D93	2150		1800X2150
D94	2150		1800X2150
D95	2150		1800X2150
D96	2150		1800X2150
D97	2150		1800X2150
D98	2150		1800X2150
D99	2150		1800X2150
D100	2150		1800X2150

CERTIFICATE OF STRUCTURAL STABILITY

WE HEREBY CERTIFY THAT THE FOUNDATION AND SUPERSTRUCTURE OF THE BUILDING PROPOSED FOR CONSTRUCTION ON MOUZA PATULIA, DAG NOS. 696 (P), 697, 698, 699, 700, 701 (P), 702, 703 (P), 704, 705 (P), 706, 707, 708, 709, 710, 711, 712, 713, 714, 715, 716, 717, 718, 719, 720, 721, 722, 723, 724, 725, 726, 727, 728, 729, 730, 731, 732, 733, 734, 735, 736, 737, 738, 739, 740, 741, 742, 743, 744, 745, 746, 747, 748, 749, 750, 751, 752, 753, 754, 755, 756, 757, 758, 759, 760, 761, 762, 763, 764, 765, 766, 767, 768, 769, 770, 771, 772, 773, 774, 775, 776, 777, 778, 779, 780, 781, 782, 783, 784, 785, 786, 787, 788, 789, 790, 791, 792, 793, 794, 795, 796, 797, 798, 799, 800, 801, 802, 803, 804, 805, 806, 807, 808, 809, 810, 811, 812, 813, 814, 815, 816, 817, 818, 819, 820, 821, 822, 823, 824, 825, 826, 827, 828, 829, 830, 831, 832, 833, 834, 835, 836, 837, 838, 839, 840, 841, 842, 843, 844, 845, 846, 847, 848, 849, 850, 851, 852, 853, 854, 855, 856, 857, 858, 859, 860, 861, 862, 863, 864, 865, 866, 867, 868, 869, 870, 871, 872, 873, 874, 875, 876, 877, 878, 879, 880, 881, 882, 883, 884, 885, 886, 887, 888, 889, 890, 891, 892, 893, 894, 895, 896, 897, 898, 899, 900, 901, 902, 903, 904, 905, 906, 907, 908, 909, 910, 911, 912, 913, 914, 915, 916, 917, 918, 919, 920, 921, 922, 923, 924, 925, 926, 927, 928, 929, 930, 931, 932, 933, 934, 935, 936, 937, 938, 939, 940, 941, 942, 943, 944, 945, 946, 947, 948, 949, 950, 951, 952, 953, 954, 955, 956, 957, 958, 959, 960, 961, 962, 963, 964, 965, 966, 967, 968, 969, 970, 971, 972, 973, 974, 975, 976, 977, 978, 979, 980, 981, 982, 983, 984, 985, 986, 987, 988, 989, 990, 991, 992, 993, 994, 995, 996, 997, 998, 999, 1000.

Signature of Architect: *[Signature]*  
 Signature of Structural Engg: *[Signature]*  
 Signature of Geo-Tech Engg: *[Signature]*

**JAY PRAKASH BHARAT KUMAR AGRAWAL**  
 B. Arch., A.I.A.  
 Reg. No. CA/84/1008  
 ARCHITECT (S.I. NO. - 321A)  
 Kalyani Municipal Corporation

**SANJAY KUMAR DUBEY**  
 M.E. (Structural), Chartered Engineer (I)  
 Structural Engineer, ESE-1142  
 Kalyani Municipal Corporation

**JAY PRAKASH BHARAT KUMAR AGRAWAL**  
 B. Arch., A.I.A.  
 Reg. No. CA/84/1008  
 ARCHITECT (S.I. NO. - 321A)  
 Kalyani Municipal Corporation

**SANJAY KUMAR DUBEY**  
 M.E. (Structural), Chartered Engineer (I)  
 Structural Engineer, ESE-1142  
 Kalyani Municipal Corporation

**JAY PRAKASH BHARAT KUMAR AGRAWAL**  
 B. Arch., A.I.A.  
 Reg. No. CA/84/1008  
 ARCHITECT (S.I. NO. - 321A)  
 Kalyani Municipal Corporation

**AGRAWAL & AGRAWAL**  
 BARODA & KOLKATA

SCALE	DATE	DEALT	CHECKED
1:100	15.07.19	SUTPARA	